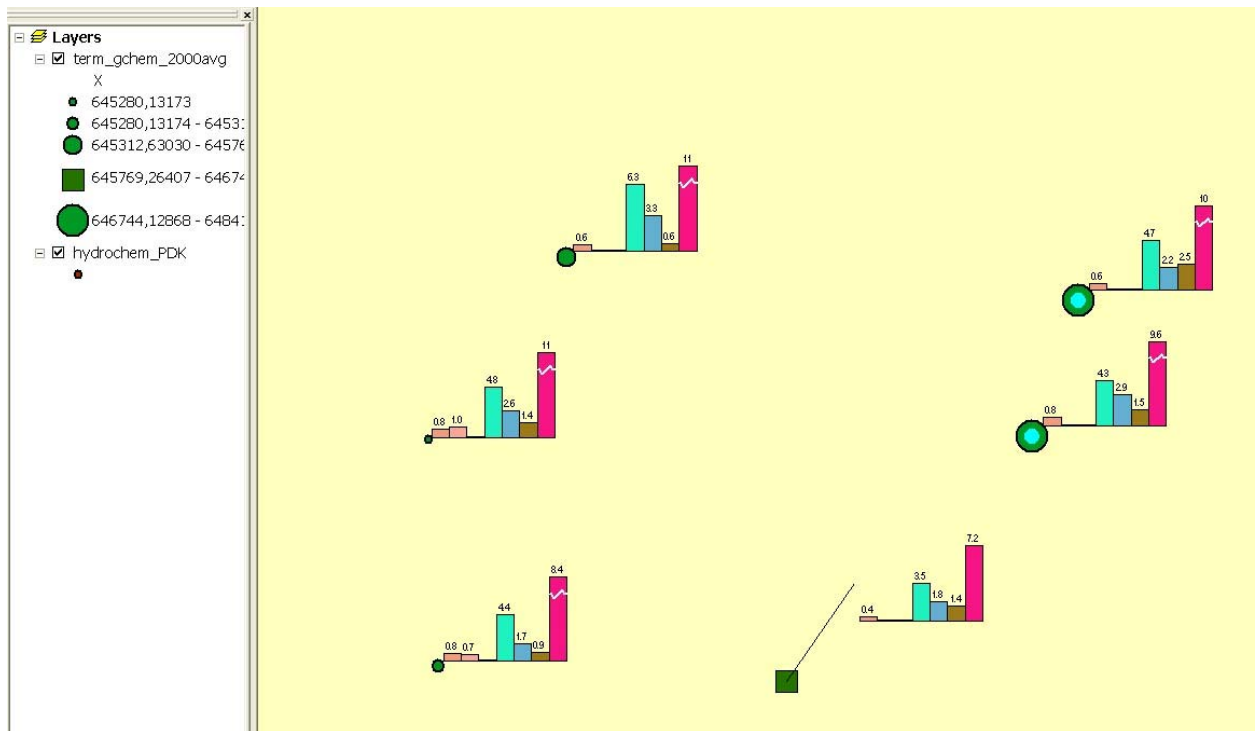


Bar Charts Creating

- ❑ *The basic benefits*
- ❑ *User guide*
- ❑ *Principle of operation*
- ❑ *Feedback*

- ❑ *The basic benefits*

- Creating the charts which are not overlap a marker of a point theme.
- Set distance from a marker to chart
- Labeling the charts
- Setting of the minimal and maximal values
- Updating of charts on the old places
- Saving a legend and parameters of creation
- Save/load annotation layer to/from file.



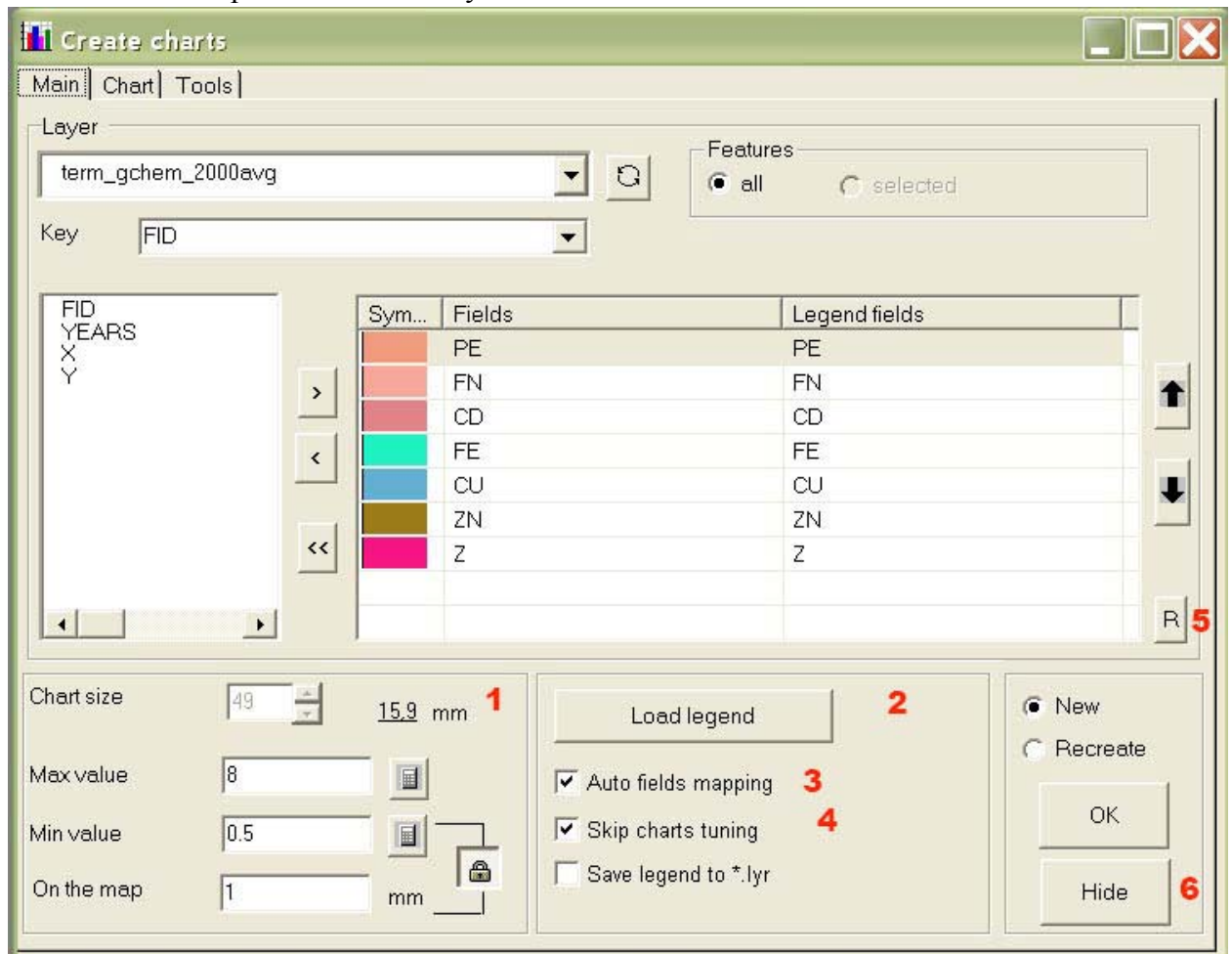
□ User guide

The charts are created on the annotation layer with name <LayerName_charts> for all or selected features

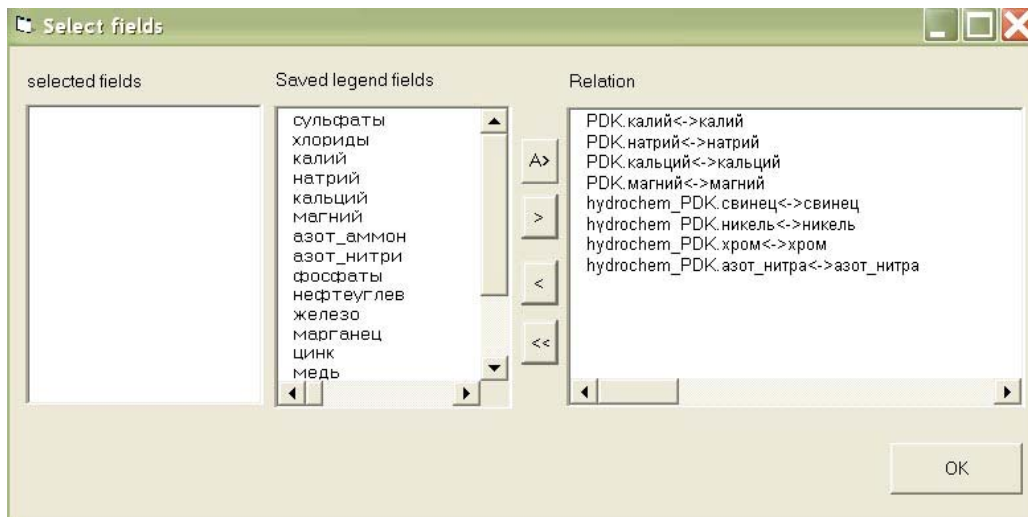
OptionButton “New” – delete annotation layer and create new charts.

OptionButton “Recreate” – refresh old charts. «Old charts» and «New charts» are related on the Key-field, which was selected.

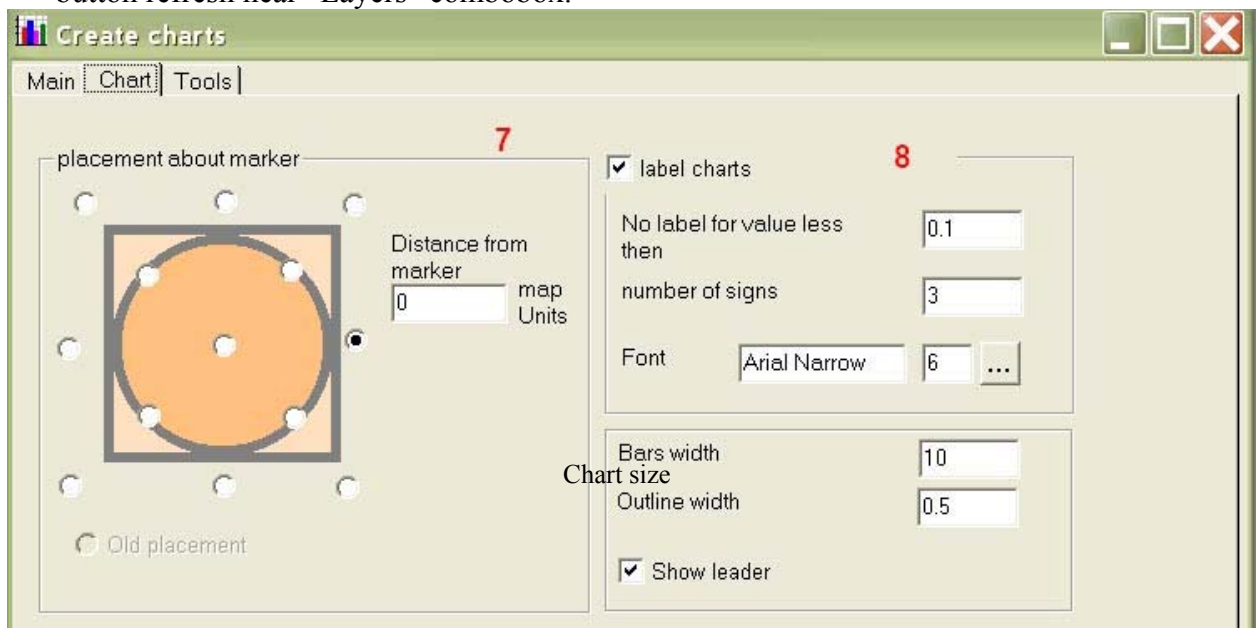
The created chart is a group of elements: chart, labels and break-line (if necessary). There are data (the key, the names and values of the fields) associated with chart element. The program was tested on the positive values only.



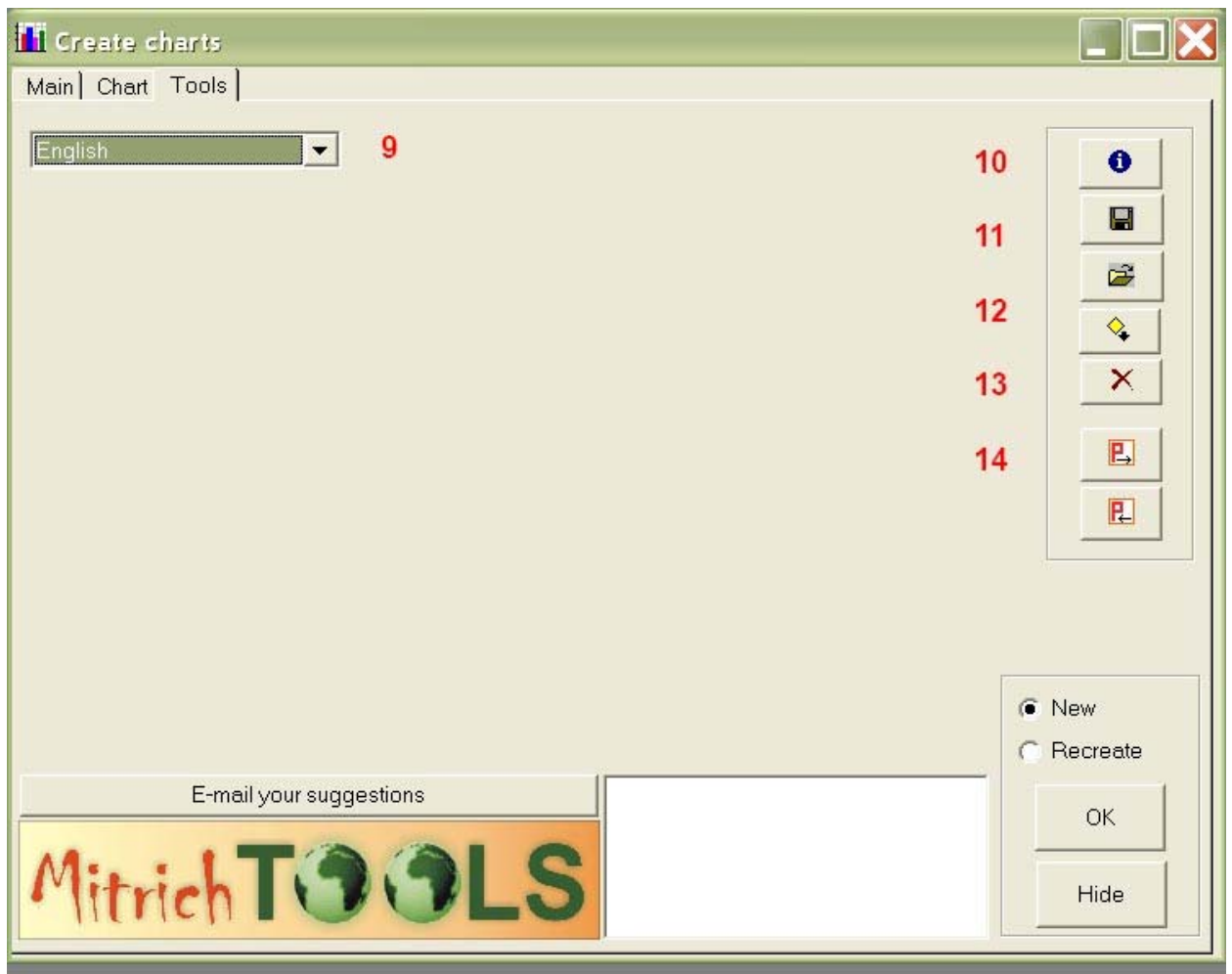
- 1- Calculating of min and max values for selected fields. When the charts are creating all values less than min value or NULL are rounded to Min value, all values more than max value are rounded to Max value and the break-line is drawing (zig-zag). Basic data in the table are not changed. It is possible to set the height of the smallest bar in millimeters in current map scale. (This value is related on max value, chart size and map ReferenceScale). The min value is changed!!! On the other hand it is possible lock the scale for min value, then the chart size will be changed
- 2- Loading legend from *.lyr or *.leg files.
- 3- The possibility to set relation between selected fields and legend fields. Auto mapping is set relation for fields like CurrentLayer.Field1 и Legend.Field1



- 4- Skip/show layer property dialog. It is possible to change all chart properties, excepting field's collection.
- 5- Random color
- 6- Hide form. If you've loaded new map, close the program ([X]-button on the upper right corner of the window) and start it again, otherwise (layers was changed) select button refresh near "Layers" combobox.



- 7- Chart placement– side or corner for rectangle markers(or marker envelope) , tangent – for circle markers. Old placement – if you use the chart refreshment. Distance from the marker is in map units.
- 8- Label and chart properties
 - Do not label bars with values less then selected
 - Number of signs in label. Example for n= 3:
 - a. 0,158 -> 0.2
 - b. 1.24 -> 1.2
 - c. 10.8 -> 11
 - d. 12558.89 -> 12559
 - Bar width, Bar default outline width, chart size



- 9- Change language
- 10- Identity the chart element (key and fields values). Select charts on the map and then press button.
- 11- Save/load annotation layer to/from file.
- 12- Save legend to file (*.leg). Select ONLY ONE chart on the map and press button. Load legend on the main page. It is useful if you forgot to save legend to .lyr file.
- 13- Multi-fields delete.
- 14- Save/load creation parameters (except legend)

□ *Principle of operation*

All fields duplicate during charts creation to the fields with name «TMP_n», for the fields in geodatabase they have alias «LayerName_for_diagramm». The new values replace the values of the temporary fields, according to minValue and maxValue parameters. New charts are converting to annotation layer. All temporary fields deleted afterwards. Notice: The error «Too many fields» occurs during the duplicating of many fields. To solve this error compact Access database and continue the work. <http://support.microsoft.com/kb/198504/EN-US/>

□ *Feedback*

It is very important for me to get your comments and suggestions
 Mailto: mitrichtools@mail.ru